



MUSKEGON COUNTY COMMISSION DISTRICT 2 FOR 2012 TO 2021

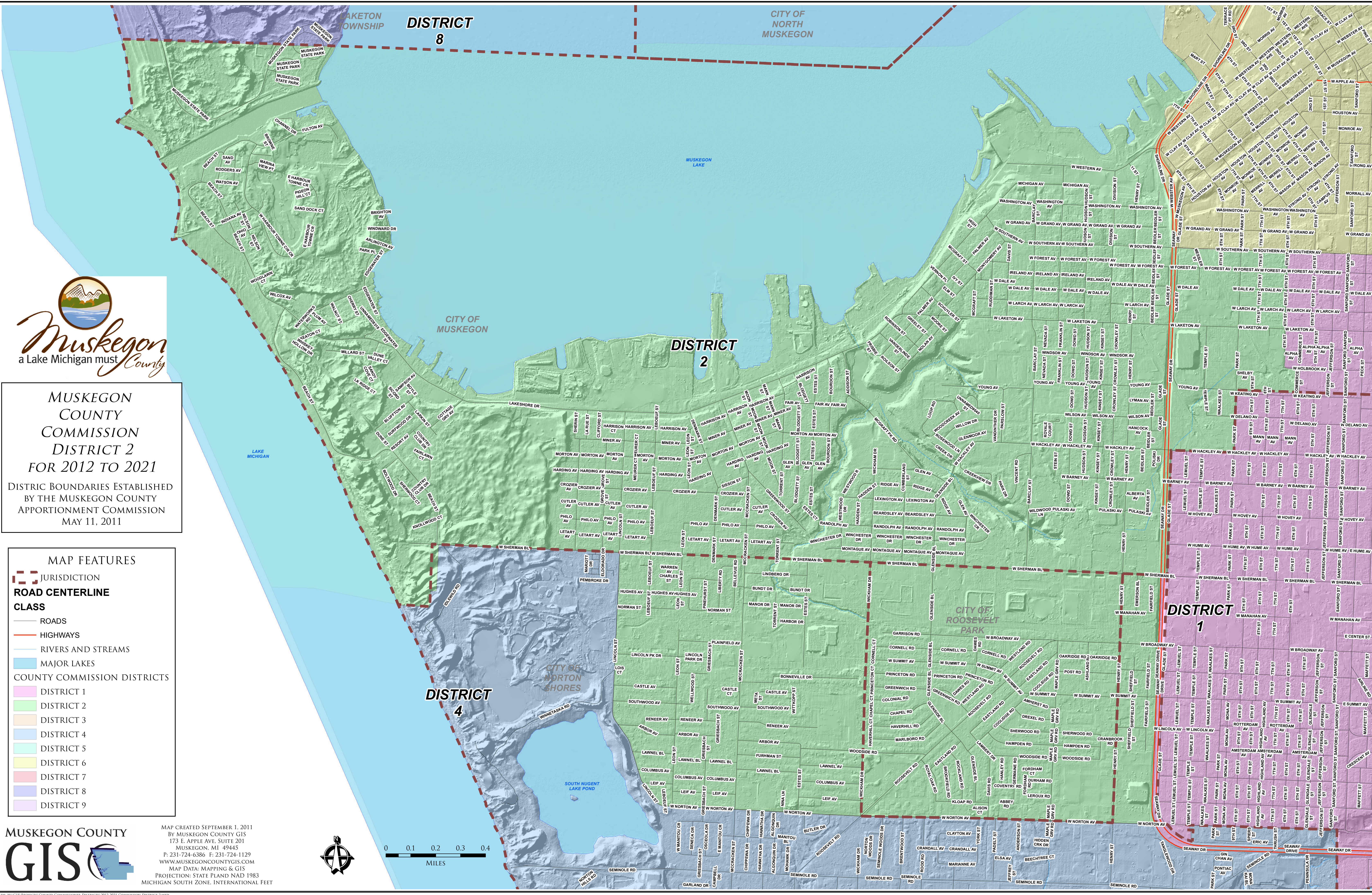
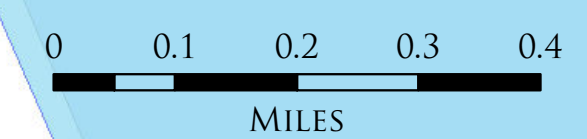
DISTRICT BOUNDARIES ESTABLISHED BY THE MUSKEGON COUNTY APPOINTMENT COMMISSION MAY 11, 2011

MAP FEATURES

- JURISDICTION (dashed red line)
- ROAD CENTERLINE CLASS
 - ROADS (solid black line)
 - HIGHWAYS (solid orange line)
 - RIVERS AND STREAMS (solid blue line)
 - MAJOR LAKES (solid light blue area)
- COUNTY COMMISSION DISTRICTS
 - DISTRICT 1 (pink)
 - DISTRICT 2 (green)
 - DISTRICT 3 (orange)
 - DISTRICT 4 (light blue)
 - DISTRICT 5 (light green)
 - DISTRICT 6 (yellow)
 - DISTRICT 7 (red)
 - DISTRICT 8 (purple)
 - DISTRICT 9 (light purple)

MUSKEGON COUNTY GIS

MAP CREATED SEPTEMBER 1, 2011 BY MUSKEGON COUNTY GIS 173 E. APPLE AVE. SUITE 201 MUSKEGON, MI 49445 P: 231-724-6386 F: 231-724-1129 WWW.MUSKEGONCOUNTYGIS.COM MAP DATA: MAPPING & GIS PROJECTION: STATE PLAND NAD 1983 MICHIGAN SOUTH ZONE, INTERNATIONAL FEET



FILE: M:\GIS\PROJECTS\COUNTY COMMISSIONER DISTRICTS\2012-2021 COMMISSION DISTRICT 2.MXD