



MUSKEGON
COUNTY
COMMISSION
DISTRICT 6
FOR 2012 TO 2021

DISTRIC BOUNDARIES ESTABLISHED
BY THE MUSKEGON COUNTY
APPORTIONMENT COMMISSION
MAY 11, 2011

MAP FEATURES

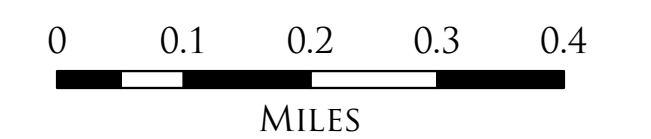
- JURISDICTION
- ROAD CENTERLINE

CLASS

- ROADS
- HIGHWAYS
- RIVERS AND STREAMS
- MAJOR LAKES

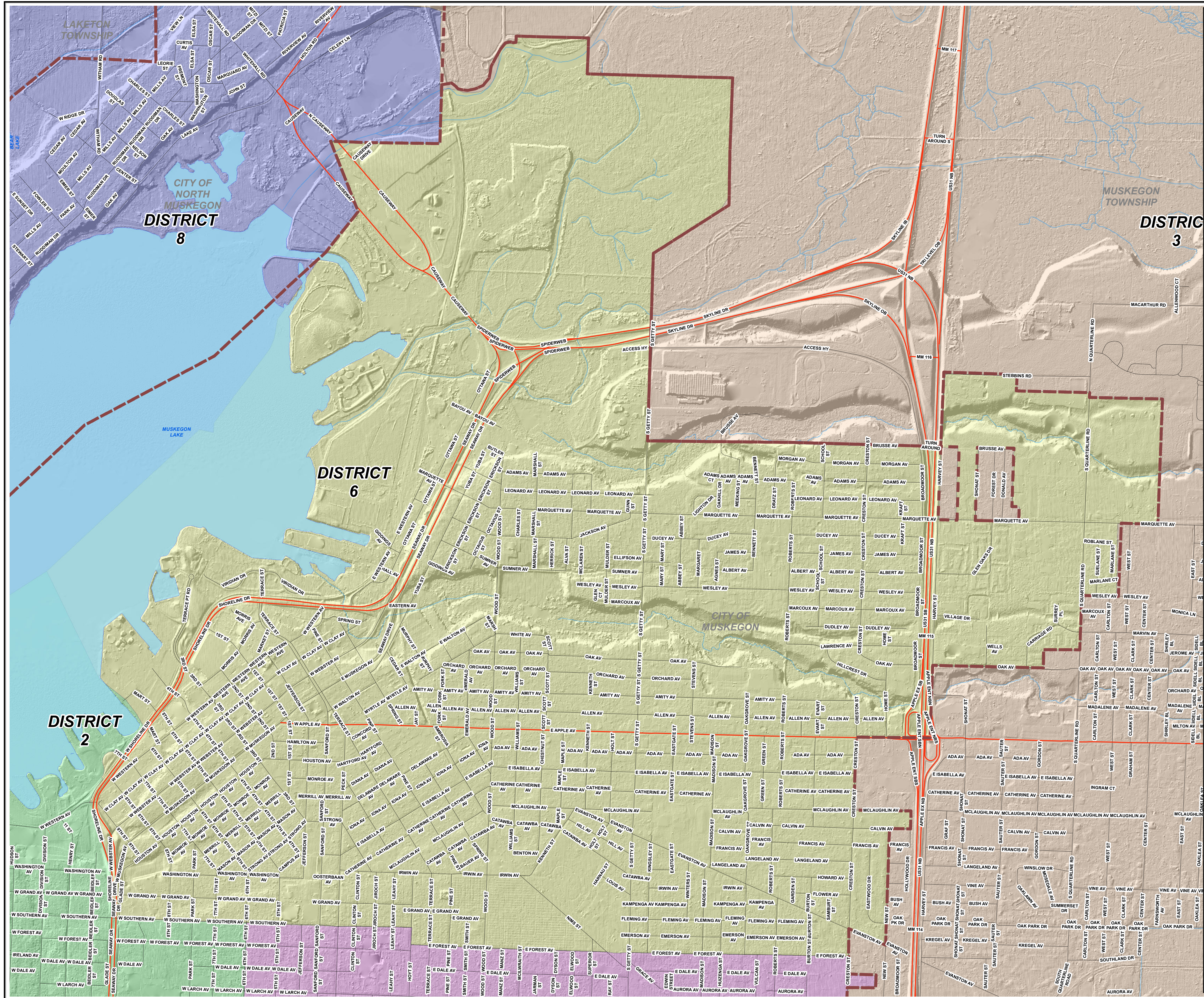
COUNTY COMMISSION DISTRICTS

- DISTRICT 1
- DISTRICT 2
- DISTRICT 3
- DISTRICT 4
- DISTRICT 5
- DISTRICT 6
- DISTRICT 7
- DISTRICT 8
- DISTRICT 9



MUSKEGON COUNTY
GIS

MAP CREATED SEPTEMBER 1, 2011
BY MUSKEGON COUNTY GIS
173 E. APPLE AVE. SUITE 201
MUSKEGON, MI 49445
P: 231-724-6386 F: 231-724-1129
WWW.MUSKEGONCOUNTYGIS.COM
MAP DATA: MAPPING & GIS
PROJECTION: STATE PLAND NAD 1983
MICHIGAN SOUTH ZONE, INTERNATIONAL FEET



FILE: M:\GIS\PROJECTS\COUNTY COMMISSIONER DISTRICTS\2012-2021 COMMISSION DISTRICT 6.MXD